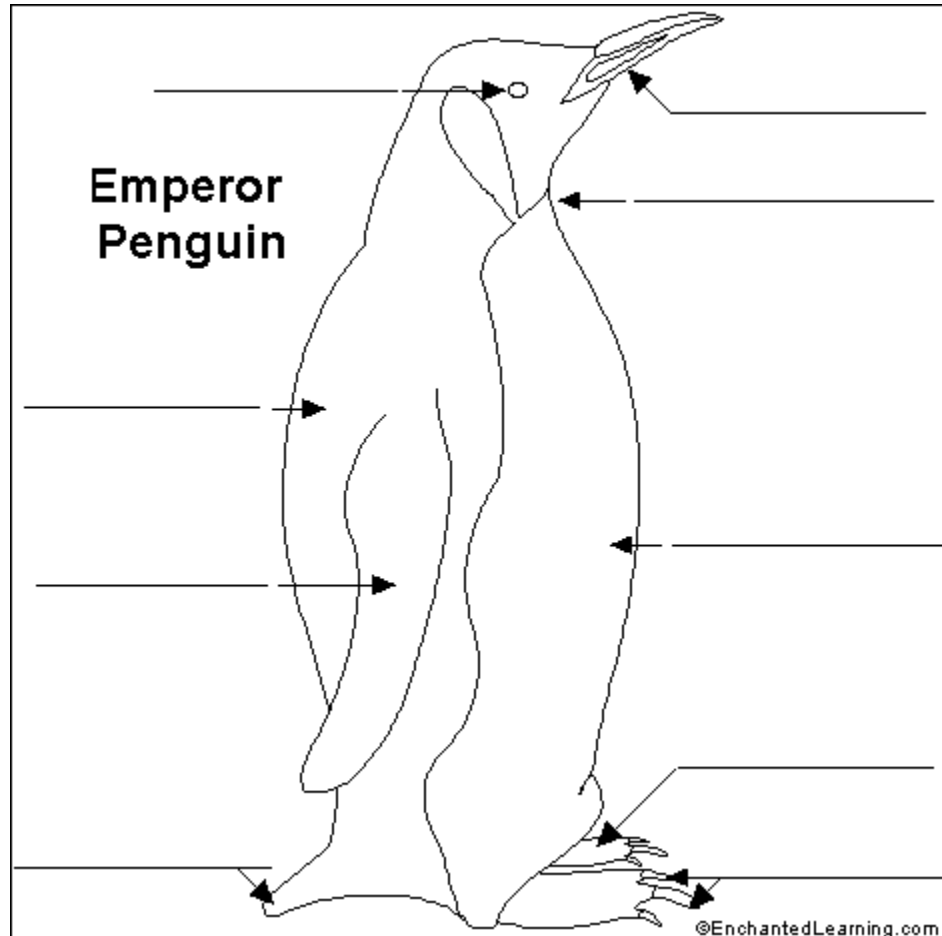


Label the Emperor Penguin

[Bird Printouts](#)

Read the definitions below, label the Emperor Penguin diagram, and color the penguin correctly.



Back - The feathers on the back are black.

Belly - The feathers on the belly are white.

Bill - Emperor Penguins have a hard, pointed bill (also called the beak) which they use to get food. The bill is black with a yellow-orange streak.

Claws - The hard, sharp end of each toe.

Eye - Emperor Penguins have two small, reddish-brown eyes with circular pupils.

Flipper-shaped Wing - Emperor Penguin wings allow these birds to swim, but they cannot fly.

Neck - Emperor Penguins have a very short neck.

Webbed feet - Webbed feet function well in the water.

Wedge-shaped tail - Emperor Penguins have a short, black tail.

Answers: Emperor Penguin [Animal Label Me](#)

Label Me! Diagram

[Printouts](#)

Read the definitions below, label the Emperor Penguin diagram, and color the penguin correctly.

